

HOLIDAY **HK** KITCHENS

DOOR BROCHURE & STYLE GUIDE



DREAM IT. LIVE IT.

ENVIRONMENTAL STEWARDSHIP

LIVE
GREEN

We are all learning how to be better to our Earth.

After 75 Years, Mastercraft Industries / Holiday Kitchens has evolved with the cabinet industries' green efforts and has adopted new practices along the way. It is not just a best practice for us, but a way of doing business from start to finish.

Today Holiday Kitchens is a proud member of the Kitchen Cabinet Manufacturer Association's (KCMA) Environmental Stewardship Program (ESP). The KCMA ESP program is a holistic approach to ensuring that each participant is held to high standards for their products, forest sustainability, and manufacturing processes.

At Holiday Kitchens we set the highest level of production standards for ourselves and expect the same of our suppliers so you can feel confident when you order Holiday Kitchens that this process is here to protect the integrity of our Environmental Stewardship.

We are excited to offer a variety of green options as you customize your new cabinetry. In the following pages, you will find beautiful options that are constructed and finished with products that either meet or exceed environmental standards and are ready to stand the test of time.



STANDARD WOOD SPECIES

FOR MORE INFORMATION GO TO HOLIDAYKITCHENS.COM

ALDER, *CHARACTER

Alder is a relatively soft and light hardwood. It ranges from light golden brown to a reddish brown. Alder has relatively straight grain and even texture. Because alder is a fast-growing tree, it often has small pin-knots, some mineral streaks, and pitch pockets. It is similar in appearance to cherry.



Alder

CHERRY, *CHARACTER

Cherry is a durable hardwood often used in fine furniture. It ranges in color from a light pinkish wheat to a rich reddish brown. The grain pattern of cherry is quite unique, with some pieces showing relatively straight grain and others showing bold, wavy arcs and bends. Cherry often has small pin-knots, some mineral streaks, and pitch pockets. Small areas of lighter colored sapwood are to be expected.



Cherry

HICKORY, *CHARACTER

Hickory is a strong, durable hardwood. It ranges widely in color from almost white to dark, reddish brown. Hickory has distinctive grain patterns and texture. Hickory often has small sound knots, mineral streaks, grain cracks, smooth flake, and a distinctive variation of other natural characteristics.



Hickory

MAPLE, *CHARACTER

Maple is a strong, dense hardwood. Holiday Kitchens maintains a very tight range of light, almost white, color. Maple can have distinctive grain and has a tight, smooth texture. Maple often has pin-knots and a few small mineral streaks.



Maple

OAK (RED OAK), *CHARACTER

Red oak is a dense, durable hardwood. It ranges in color from a light brown to a pinkish brown. Oak has relatively distinctive arching grain and porous texture. Oak often has small pin-knots and some mineral streaks.



Oak

**Character - has a rustic appearance. This includes sound knots of varying sizes, and a wider variation of color, sapwood and other natural characteristics.*

STANDARD WOOD SPECIES

OAK, QUARTER-SAWN (RED OAK)

Quarter-Sawn oak has similar characteristics to oak, but is cut from the tree in a different manner that yields a tight, straight grain pattern. It tends to range slightly redder in color than Holiday Kitchens' standard red oak. Quarter-Sawn Oak shows very few small knots and some mineral streaks. In addition to its tight grain, quarter-sawn oak yields "flakes", which are distinctive, shiny portions of the grain.



Quarter-Sawn Red Oak

OAK, WHITE

White Oak is a dense, durable hardwood, similar to Red Oak. Wood color that ranges from a greenish-gray to a light brown, occasionally with a slight pink hue. White Oak has arching grain and a porous texture. Some small pin knots and mineral streaks are common.



White Oak

PAINT GRADE

Paint Grade consists of Maple stiles and rails and a MDF center panel on doors and is a strong, dense hardwood with tight grain and smooth texture making it ideally suited to painting. The color range varies more with Paint Grade as this is not visible through the paints.



Paint Grade

PAINT GRADE MDF

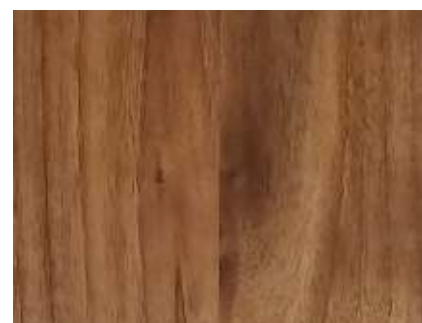
Paint Grade MDF offers an alternative to Paint Grade for paints. Paint Grade MDF consists of MDF material only with a smooth texture making it ideally suited to painting.



Paint Grade MDF

WALNUT

Walnut is a strong and versatile wood and is a mix of heartwood and sapwood. Walnut can range in color from a warm chocolate brown to nearly white with a variation of grain patterns and a medium texture.






Walnut

Due to the distinct properties of each wood species, some finishing options are limited to certain species; check the Finish Availability for more information.

WOOD STAINS

Actual colors may vary from this printed brochure. Request a sample of wood species and color for a more accurate representation.

	Alder	Cherry	Hickory	Maple	Red Oak	Quarter-Sawn Red Oak	White Oak	Walnut
Acorn								
Autumn								
Butternut								
Candy								
Canyon								
Caraway								
Chablis								
Cobblestone								
Cocoa								
Coffee Bean								
Concord								
Country Hearth								
Driftwood								
Dusk								
Empire								
Fireside								
Fog								
Gothic Brown								
Granite								
Hallmark								
Kodiak								
Knight								
Linen								
Meadow								
Merlot								
Misty								
Natural								
Navy								
Nutmeg								
Pebble								
Praline								
Sandalwood								
Sunrise								
Tessur								
Truffle								
Village								
Woodridge								

STANDARD PAINTS



Actual colors may vary from this printed brochure. Request a sample color for a more accurate representation.

CUSTOM PAINTS

Holiday Kitchens provides many standard paint options and we know that sometimes you just need a very specific color, for those moments we offer the Benjamin Moore/Sherwin-Williams Custom Paint Matching Program, This program allows you to choose the cabinet color of your dreams.



SHEENS

A sheen can change the look of any color, all standard paints and stains are available in standard, matte or flat sheen



GLAZE OPTIONS

A glaze is an accent color applied to enhance the grain, style and detail of a cabinet door.

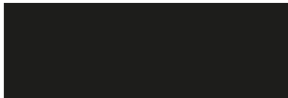
Standard Glazes



Alpine



Mocha



Onyx



Toffee

Wash Glazes



Graphite



Latte



Mink

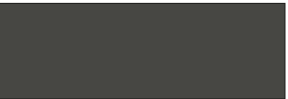


Pewter

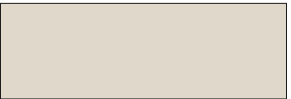


VanDyke

Brush Glazes - Available on All Standard Stains and on Select Paints



Harbor



Suede



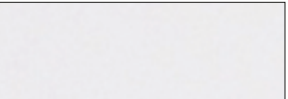
Tudor

Double Glaze

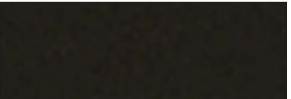


Standard

Silk Brush Glazes - Available on Paints Only



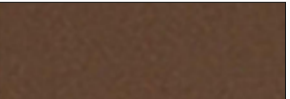
Frost



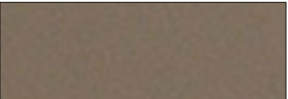
Midnight



Sandstone



Shale



Slate

Crackle



Byzantine



Ionian



Phoenician



Roman



Venetian (Clear)



Canterbury, Character Cherry in Vineyard with Mocha Glaze and Carriage House Vintage Artistry
Cabinet Country Ltd & Flooring Unlimited - WI | Megan O'Leary Photography
Designer: Tessa Slavin Dongarra

SPECIALTY FINISH

CERUSED

The cerused technique is a hand-brushed finishing treatment that deepens the woods natural grain allowing it to accept a contrasting pigment resulting in a beautifully, unique finish. All of our glaze colors are available to use for cerusing. Available on Oak, Character Oak, Quarter-Sawn Oak, Hickory and Character Hickory.



CRACKLE

Crackle simulates cracked paint that allows the color beneath to show offering a wide range in the final appearance due to the crackle color and base color chosen. Crackle can be used with any stain or primer. The crackles will have a wide variety in size and appearance.

Available on the following wood species: Alder, Cherry, Hickory, Maple, Paint Grade MDF, Oak, Quarter Sawn Oak, White Oak and their character species.



LOGORO

Logoro is mechanical aged process that simulates an aged, time-worn look. The base color is available in all of our standard paints and full custom paints. Special BM/SW match pricing is not available. After your base color is picked, a heavy, deep-biting stain is applied over the surface (no color options) making a beautiful finish. Logoro is available on the following wood species: Alder, Cherry, Hickory, Maple, Oak, Quarter-Sawn Oak, White Oak and their Character options. Some additional treatments are allowed at the regular up charge including: wormholes, splits, distressing, joint-cuts, knife-outs with rasping and eased edges and corners.



LOGORO MOLTE

Logoro Molte features the same beautiful characteristics of Logoro, but has peeled paint revealing the wood underneath adding to the aged look.



WEATHERED

Several new door styles, including Weathered Contemporary, Weathered Mission, Weathered Seattle and Weathered Seattle Duet; and shiplap options made with wood that have been mechanically brushed to create deep, worn lines in the surface of each component. The door is assembled after mechanical brushing so that lines are in the direction of the grain for each component of the door. Available painted or stained and on the following species: Alder, Cherry, Maple, Paint Grade and Paint Grade MDF and their Character options.



VINTAGE ARTISTRY

Vintage Artistry finish treatments are designed to create an aged, worn look similar to what can be found on antique furnishings. We recommend approving a door sample prior to ordering any of the Vintage Artistry options so that you can clearly visualize the look. Vintage Artistry is available with any of our top coat sheens, though we recommend either flat or matte to achieve the aged furniture look.

CARRIAGE HOUSE

Available on Alder, Cherry, Oak and their Character options and available White Oak. This is Holiday Kitchens' specially designed heavy worn look. A coat of paint is lightly applied over a pre-stain finish to allow a dark brown undertone of natural wood grain to gently telegraph through the paint. A heavy worn look is performed, simulating aged wood showing through finishing that has been naturally worn away by heavy use. The component is then glazed, completing the aged look. All of this is fully top coated to protect the component. Additionally, wormholes, splits, distressing and flyspeck vintage artistry options can be added at no charge, but must be specified. Our standard options are Sandalwood pre-stain, one light coat of paint, heavy worn look (other Vintage Artistry options must be specified), choice of standard glaze or wash, and choice of topcoat. Other color options are available as custom color matches. When electing Carriage House, you must add for paint and glaze premiums. Not recommended on mitered doors.



Carriage House

DISTRESSING

Using special tooling, random dents and dings are applied to the surface of solid wood to give the appearance of wear and age. Finish is applied after distressing to preserve the wood. Distressing can be done on any visible surface, including finished interiors.



Distressing

EASED EDGES & CORNERS

Prior to finishing, the corners and some edges of the component are sanded down to give the soft, rounded look common in antique furniture. Unlike Worn Look, the finish is not worn after application. This can be done on the outside corners and edges of doors, drawer fronts, decorator panels, decorative moldings, and valances. Not recommended on mitered doors.



Eased Edges and Corners

FLYSPECK

Small specks of dark finish are applied randomly to the surface of the wood to give the appearances of aging. This is applied to the entire exterior of a component, as well as to any finished interiors. Our standard color is black, but custom color matches are available if a different shade is desired.



Flyspeck

JOINT-CUTS

Joints of assembled components are accented by applying distinctive hand cuts along the joint line. Multiple angled, v-shaped cuts are made at each joint. This look is not meant to provide a machined v-groove appearance, but rather the look of hand-crafted joint. Joint cuts will be irregular in width and appearance. This look is available on any door, drawer front, decorator panel, appliance panel, or wainscot with cope and stick construction. Not available on molding applied or mitered door styles.



Joint-Cuts

VINTAGE ARTISTRY

KNIFE-OUTS

Wood is carved along solid edges in a method similar to whittling. Gouged out edges are smoothed by gentle sanding to give the appearance of old, worn damage found in antique furniture. The corners and some other edges will be worn down, as with Eased Edge and Corner treatment. This treatment can be done on the outside and the inside corners and edges of doors, drawer front, decorator panels, decorative moldings, and valances.



Knife-Outs

KNIFE-OUTS WITH RASPING

Wood is carved away along solid edges in a method similar to whittling. Gouged out edges are smoothed by gentle sanding to give the appearance of old, worn damage found in antique furniture. These gouges are then textured using a cross-hatch pattern applied with a knurled wood rasp. The corners and some other edges will be worn down, as with Eased Edge and Corner treatment. This treatment can be done on the outside and inside corners and edges of doors, drawer fronts, decorator panels, decorative moldings, and valances.



Knife-Outs with Rasping

SPLITS

Tooled, thin lines running with the grain are carefully applied to solid wood doors to give the appearance of being cracked without sacrificing the strength of the component. Random splits, resulting from drying and movement of the wood or hard use, are common in old wood, and this look captures that feel. Splits will range in size from 1 to 3 inches. They will be found at the beginning of the edge and extend inward along the grain applied to solid doors and drawers only. Not available on mitered doors styles.



Splits

WORMHOLES

Small round holes are punched randomly into the surface of solid wood components to simulate natural wormholes in wood. These holes are applied singly and in random clusters. Wormholes can be applied to any solid wood material such as doors, drawers fronts, trim moldings, face frames, and decorator end panels. Wormholes cannot be applied to veneered sheet goods, such as plywood.



Wormholes

WORN LOOK

Prior to finishing, the corners of the component are worn down to give the soft, rounded look common in antique furniture. After finish color is applied, these corners will be lightly hand-sanded and rubbed again to break through the finish, simulating natural wear over time. Our strong, protective topcoat is applied after this wearing to preserve the component. This can be done on the outside corners and edges of doors, drawer fronts, decorator panels, decorative moldings, valances, and cabinet frames. Not recommended on mitered door styles.



Wornlook

WOOD DOOR STYLES

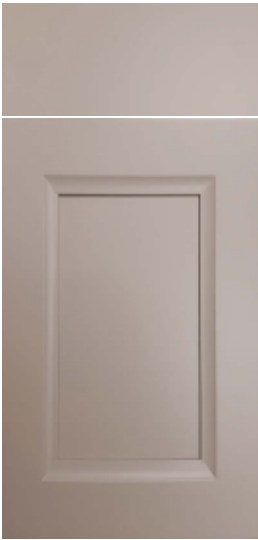
FLAT PANEL - COPE & STICK



Birmingham Arch Cherry Door in Sunrise



Birmingham Square Paint Grade MDF Door In Nordic



Bradford Paint Grade Door in Vineyard



Bradford90 Paint Grade MDF Door in Nordic



Canterbury 3" Stiles & Rails Walnut Door in Natural Walnut



Charleston 3" Stiles & Rails Paint Grade Door in Stone Brown with Frost Silk Brush Glaze



Davenport 3" Stiles & Rails Character Alder Door in Canyon



Kingston Arch Cherry Door in Concord



Kingston Square Paint Grade MDF Door in Galveston with Frost Silk Brush Glaze



Madison Paint Grade Door in Stone Brown with Harbor Brush Glaze



Mission Alder Door in Nutmeg with Mocha Glaze



Petersburg Arch Oak Door in Sunrise

WOOD DOOR STYLES

FLAT PANEL - COPE & STICK CONTINUED



Petersburg Square Maple Door in Chablis



Petersburg Square Groove Oak Door in Barn Red with Onyx Glaze



Phoenix Alder Door in Cocoa



Prairie Quarter Sawn Oak Door in Autumn with Onyx Glaze



Quincy Paint Grade Door in Ebony



Seattle Quarter Sawn Oak Door in Chablis with Onyx Glaze



Seattle Duet Oak Door in Linen



Seattle Groove Paint Grade Door in Wave



Seattle Groove Duet Paint Grade MDF Door in Galveston



Wakefield Paint Grade Door in Nordic



Weathered Mission Cherry Door in Fireside with Onyx Glaze



Weathered Seattle Maple Door in Fog with Onyx Glaze



WOOD DOOR STYLES

FLAT PANEL - COPE & STICK CONTINUED



Weathered Seattle Duet Paint Grade MDF Door in Storm with VanDyke Wash



Wiltshire Arch Hickory Door in Meadow



Wiltshire Square Paint Grade Door in Storm



Winslow Paint Grade Door in Stone Brown

FLAT PANEL - MITERED



Winslow Groove Paint Grade Door in Wave with Harbor Brush Glaze



Beck Paint Grade Door in Galveston with Onyx Glaze



Edgewater Cherry Door in Fireside



Exquisite Quarter Sawn Oak Door in Acorn



Milan Cherry Door in Autumn with Onyx Glaze



Palermo Paint Grade Door in Stone Brown



Rio Paint Grade Door in Snowdrift with Mink Wash



Seaside Cherry Door in Granite

WOOD DOOR STYLES

FLAT PANEL - MITERED CONTINUED



Uptowne Cherry Door in Hallmark



Waterford Cherry Door in Pebble



Austen Character Alder Door in Autumn w/ Onyx Glaze; Eased Edges & Corners, Splits, Wormholes, Distressing, Knife-Outs w/ Rasping & Joint Cuts



Embassy Paint Grade Door in Cameo with Mocha Glaze



Essex Cherry Door in Hallmark with Onyx Glaze



Laramie Character Oak Door in Fog with Onyx Glaze with Knife-Outs with Rasping and Joint-Cuts



Lincoln Maple Door in Linen with Mocha Glaze



Wayland Alder Door in Gothic Brown with Graphite Wash

RAISED PANEL - COPE & STICK



Carlisle Cherry Door in Knight



Harrisburg Arch Oak Door in Sunrise



Harrisburg Arch II Paint Grade Door in Breeze with Graphite Wash



Colonial Oak in Kodiak

WOOD DOOR STYLES

RAISED PANEL - COPE & STICK CONTINUED



Harrisburg Square Alder Door in Knight with
Byzantine Crackle



Lancaster Arch Cherry Door in Country Hearth



Lancaster Double Arch Maple Door in Sandalwood



Lancaster Square Cherry Door in Woodridge with
Mocha Glaze



Lancaster Square Duet Maple Door in Praline with
Alpine Glaze



Lexington Arch Maple Door in Butternut



Lexington Double Arch Maple Door in Antique White



Lexington Square Character Oak Door in Autumn



Lexington Square Duet Paint Grade MDF Door in
Laguna



Oxford Cherry Door in Country Hearth



Pioneer Paint Grade Door in Storm with
Harbor Brush Glaze



Regency Maple Door in Snowdrift with Toffee Glaze

WOOD DOOR STYLES

RAISED PANEL - COPE & STICK CONTINUED



Summit Arch Cherry Door in Canyon



Summit Square Paint Grade Door in Storm



Tuscany Oak Door in Village



Winchester Arch Maple Door in Breckenridge



Winchester Double Arch Cherry Door in Butternut



Winchester Square Maple Door in Bone



Winchester Square Duet Maple door in Sage with Mink Wash

RAISED PANEL - MITERED



Cedarcreek Hickory Door in Meadow



Presidential Cherry Door in Butternut with Vandyke Wash



Riverside Maple Door in Snowdrift with Mink Wash



Springdale Cherry Door in Truffle

WOOD DOOR STYLES

RAISED PANEL - MOLDING APPLIED MITERED



Georgian Maple Door in Cameo with Mocha Glaze



Lakeshore Maple Door in Linen with Alpine Glaze



Marquis Maple Door in Sandalwood with Mocha Glaze



Newcastle Cherry Door in Tessur with Mocha Glaze



SLAB



Saxony Cherry Door in Hallmark with Onyx Glaze



Contemporary Maple Door in Tessur



Contemporary Paint Grade MDF in Bone



Weathered Contemporary Paint Grade MDF Door in Nordic



Contemporary, Alder in Cocoa
Nicely Done Kitchens - VA | Photographer: Kaan Ozturk Photography
Designer: Cathy Goss

HOLIDAY **HK** KITCHENS

WOOD DOOR STYLES

MULLION/ROUTED FOR GLASS



Bastille Cherry Door in Coffee Bean



Country Mullion Lancaster Square Oak Door in Butternut with Mocha Glaze



Country Mullion Harrisburg Arch Cherry Door in Woodridge



Diamond Mullion Cherry Door in Hallmark



Lancaster Square Mullion Paint Grade Door in Ivory



Mullion - Single Eclipse Paint Grade MDF Door in Nimbus



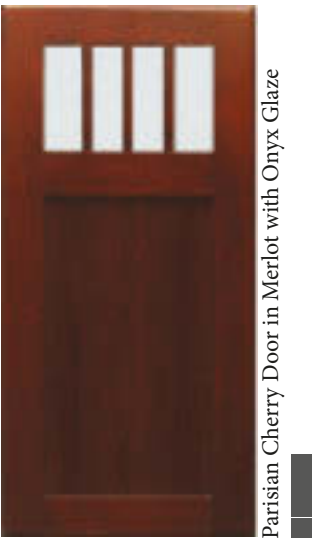
Double Eclipse Cherry Door in Fireside with Graphite Wash



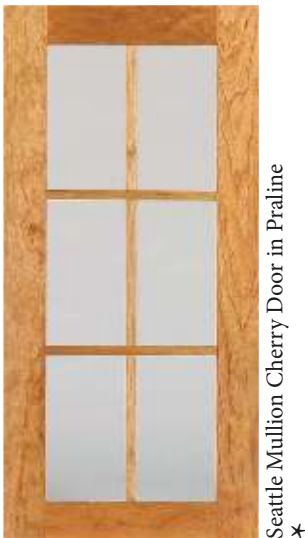
Mullion - Single X MC1 Paint Grade MDF Door in Nordic



Mullion - Single X MC2 Paint Grade MDF Door in Cameo



Parisian Cherry Door in Merlot with Onyx Glaze



Seattle Mullion Cherry Door in Praline



Tuscany Routed for Glass Paint Grade Door in Ebony

★ NON-STANDARD DOOR PRICING
 ■ PRICE CATEGORY OF DOOR ONLY

ONE PIECE MDF DOORS

These solid MDF Doors are both stylish and durable. The One Piece MDF Door is routed so there are no seams, constructed with water resistant MDF, replicating 5-piece designs and available in all paint colors, making these ideal for any cabinet project.



Danube in Nordic



Elbe Door in Winter



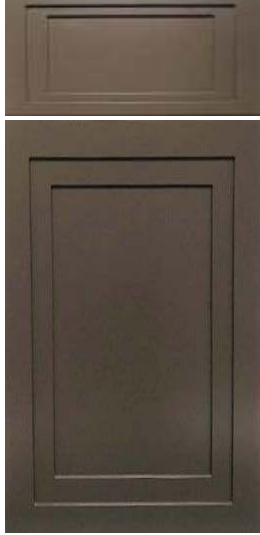
Rhine in Antique White



Seine in Galveston



Thames in Breeze with Graphite Wash



Tyne in Stone Brown



Volga in Galveston



Thames, One Piece Paint Grade MDF Breeze with Graphite Wash
Hood: Storm with Graphite Wash
Mountain West Marketing - CO

HOLIDAY **HK** KITCHENS

STANDARD FOIL DOORS & COLORS

AVAILABLE IN FRAMELESS ONLY



Alero Square Foil Door in Amati Walnut



Alero Arch Foil Door in Glacier White



Amesbury II Foil Door in Antique Stain



Classic Foil Door in Antique Satin



Lexus Arch Foil Door in Glacier White



Lexus Square Foil Door in Glacier White



Novara with Pull #1 Foil Door in Glacier



Shaker Foil Door in Copa Cabana



Shaker Duet Foil Door in Glacier White



Shaker Groove Foil Door in Cream



Ultima Arch Foil Door in Cream



Ultima Square Foil Door in Cream



Novara, Standard Foil in White Satin

HOLIDAY **HK** KITCHENS



Amati Walnut



Antique Satin



Antique White



Bisque



Black Matte



Candlelight



Cherry Blossom



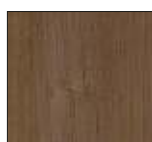
Choco Cherry



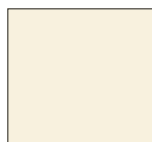
Chocolate Pear



Coffee Bean



Copa Cabana



Cream



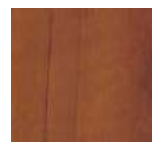
Dolce Vita



Glacier White



Rustic Cherry



Sienna Wild Apple



Summer Flame



White Satin

GLAZED FOIL DOOR COLORS

AVAILABLE IN FRAMELESS ONLY



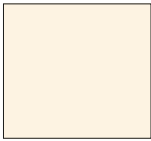
Amesbury II Foil Door in Antique Satin with Glaze



Classic Foil Door in White Satin with Glaze



Amati Walnut



Antique Satin



Bisque



Candlelight



Cherry Blossom



Rustic Cherry



Summer Flame



White Satin

LAMINATE

AVAILABLE IN FRAMELESS ONLY



Geneva MDF/HPL Door in Custom Color



Pearce MDF/HPL Door in Custom Color



Geneva, HPL Black Gloss
Exquisite Kitchen Design - NY | David Hershkowitz

METAL

AVAILABLE IN FRAMELESS ONLY



Aluminum Frame Door with Satin Glass



Stainless Steel Door

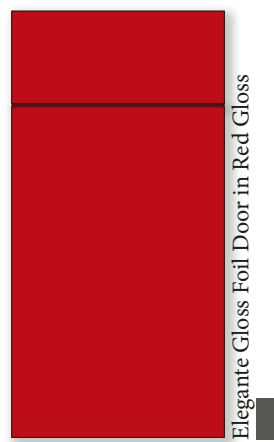


Aluminum Frame with Satin Glass
Sync Design & Riverbend Custom Cabinetry & Millwork - VA
Stacey Hoffman



GLOSS FOIL DOORS & COLORS

AVAILABLE IN FRAMELESS ONLY



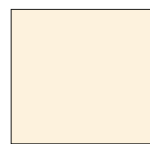
Elegante Gloss Foil Door in Red Gloss



Italia Gloss Foil Door in Maria Rose Gloss



Novara Gloss with Pull #3 Foil Door in Steel Gloss



Antique Gloss



Maria Rose Gloss



White Gloss



Black Gloss



Red Gloss



Linear Graphite Gloss



Steel Gloss



Alero Square Gloss Foil Door in White Gloss



Alero Arch Gloss Foil Door in White Gloss



Classic Gloss Foil Door in White Gloss



Lexus Square Gloss Foil Door in White Gloss



Lexus Arch Gloss Foil Door in White Gloss

EXPRESSIONS TEXTURED WOODGRAIN



Dark Oak Melinga



Fisherman's Wharf



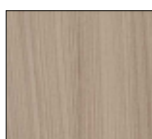
Grand Canyon



Kings Canyon



Kona



Malibu



Outer Banks



Oyster Bay



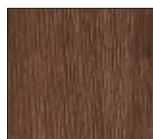
Royal Canyon



Rustic Light Oak



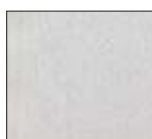
Silver Stream



Vintage Sepia Oak



Weathered Grey Oak



White Oak Melinga

Elegante Door in Kona
Kitchen Design Partners, Inc - IL | Photographer: Dennis Jourdan Photo & Video
Designer: Nancy Jacobson



Elegante Door in Fisherman's Wharf
Cabinet Country & Flooring Unlimited - WI | Megan O'Leary
Photography
Designer: Tessa Slavin Dongarra

FIVE PIECE FOIL DOORS & COLORS

AVAILABLE IN FRAMELESS ONLY



Fortezza Foil Door in Bisque with Glaze



Palazzo Foil Door in Bisque with Glaze



Portabella Foil Door in Summer Flame with Glaze



Turin Foil Door in Rustic Cherry

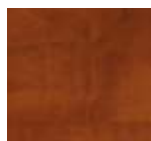
Bisque



Candlelight



Rustic Cherry



Summer Flame

EXOTIC SOLID REAL WOODS

AVAILABLE IN FRAMELESS ONLY

Moso Blonde Bamboo Door in Natural - Vertical Grain

Moso Blonde Bamboo Door in Natural - Horizontal



Palm Fl Coconut Palm Door in Natural

Vertical Grain is Standard, Horizontal Grain Available
Finishes available: Butternut, Country Hearth, Hallmark, Sandalwood, Truffle

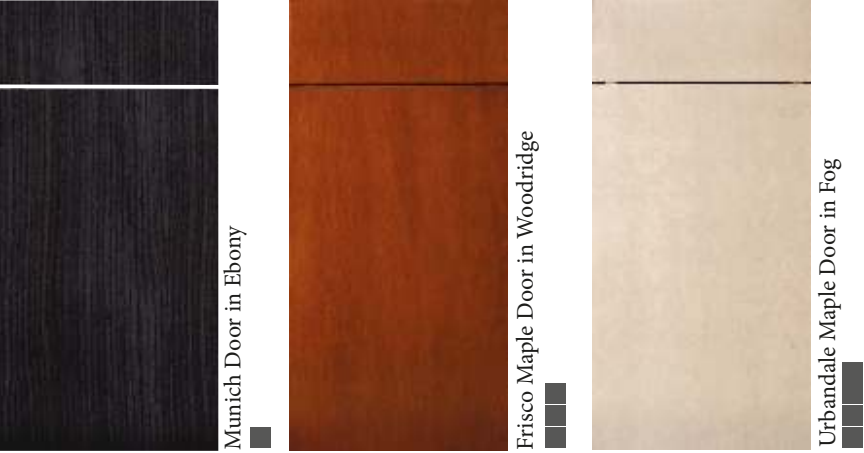
*Vertical Grain is Standard,
Horizontal Grain Available
Finishes Available: Natural Only*



Actual colors may vary from this printed brochure. Request a sample color for a more accurate representation.

VENEER DOORS & COLORS

AVAILABLE IN FRAMELESS ONLY



ACRILUX / ACRYLIC

AVAILABLE IN FRAMELESS ONLY



DRAWER BOX OPTIONS



LEVEL 1
Shoulder-Top Unfinished Dovetail



LEVEL 2
Shoulder-Top Finished Dovetail



LEVEL 3
Bullnose-Top Filled and Finished Dovetail



LEVEL 4
1/2 Bullnose-Top Filled and Finished Dovetail with Black Walnut Front



LEVEL 5
1/2 Bullnose-Top Filled and Finished Dovetail with Black Walnut Sides



TANDEMBOX
Gray Epoxy Coated Metal Sides with Industrial Board Bottom with Gray Melamine Applied
FRAMELESS

GUIDES



LEVEL A
3/4 Extension Side Mount
(drawer and rollout)
FRAMED



LEVEL B
7/8 Extension Under Mount Drawers
(3/4" side mount rollouts)
FRAMED



LEVEL C
Full Extension Under Mount
FRAMED & FRAMELESS



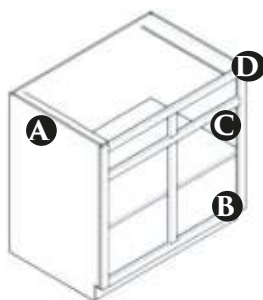
LEVEL D
Quadro 4D Adjustable Under Mount
FULL EXTENSION | FRAMED & FRAMELESS



LEVEL E
Quadro 4D Push To Open Adjustable Under Mount
FULL EXTENSION | FRAMED AND FRAMELESS (except inset)

Always refer to the catalog for the most current information

FRAMED CONSTRUCTION



1/2" Hybrid Box

- A. Housing:**
Wood grain vinyl interior - 1/2" plywood sides, 1/2" particle board top and bottom, 1/2" plywood back
- B. Toe Board:**
1/4" plywood 3-3/8" high pieces loose for field installation onto toe kick support board, dimensions shown are after jobsite installation
- C. Shelves:**
3/4" particle board with vinyl applied both sides and PVC banding. Shelves are adjustable on spoon clips
- D. Face Frame:**
3/4" x 1-1/2" solid hardwood

Every part of Holiday Kitchens Framed cabinets are interlocked with dados, including backs, deck tops, siderails, dividers and toe kick support.

1/2" Plywood Box

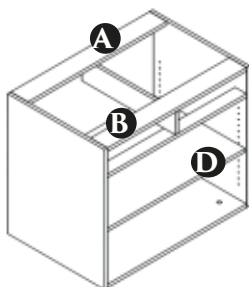
- A. Housing:**
Wood grain vinyl interior - 1/2" plywood sides, bottom, and back
- B. Toe Board:**
1/4" plywood 3-3/8" high pieces loose for field installation onto toe kick support board, dimensions shown are after jobsite installation
- C. Shelves:**
3/4" plywood with vinyl applied both sides and PVC banding. Shelves are adjustable on spoon clips
- D. Face Frame:**
3/4" x 1-1/2" solid hardwood



5/8" Plywood Box

- A. Housing:**
Natural Maple pre-finished veneer interior - 5/8" plywood bottom, unfinished sides, and plywood back
- B. Toe Board:**
1/4" plywood 3-3/8" high pieces sent loose for field installation onto toe kick support board, dimensions shown are after jobsite installation
- C. Shelves:**
3/4" maple plywood with maple edge banding, adjustable on spoon clips
- D. Face Frame:**
3/4" x 1-1/2" solid hardwood

FRAMELESS CONSTRUCTION



3/4" Melamine

- A. Hanging strips** 1/2" x 2-13/16"
- B. Housing:**
Available in White Melamine, Natural Maple Melamine, NAF Melamine and NAF Natural Maple Veneer
- C. Toe Board:**
3/4" industrial board 4-3/8" high pieces loose for field installation.
- D. Shelves:**
Match the interior. Shelves are adjustable on spoon clips

Frameless cabinets, also referred to as Full-access or European-style cabinets, provide a contemporary style, maximized storage space with wider drawers and rollout shelves (versus framed units) and provides continuous symmetry of door and drawer lines.

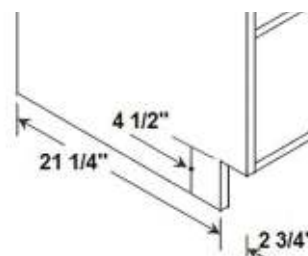
3/4" Plywood

- A. Hanging strips** 1/2" x 2-13/16"
- B. Housing:**
Available in Plywood and NAF Plywood
- C. Toe Board:**
3/4" Plywood 4-3/8" high pieces loose for field installation.
- D. Shelves:**
Match the interior. Shelves are adjustable on spoon clips



Toe Kick Options

Notched for toe, sides extended down.



Adjustable Leg Levelers:

Adjust leg height from 3-3/4" to 5-3/4"



Perimeter and Pantry: Laramie, Paint Grade MDF in Custom Color
Island: Laramie, Paint Grade MDF in Laguna with Frost Silk Glaze
Bee Studios - FL | Photographer: Rickie Agapito, AOFOTOS, Inc
Designer: Brooke Eversoll, CKD, CBD



Made with Pride in the USA

holidaykitchens.com